

## Fuji SPH2000/3000 IEC Mode (Ethernet)

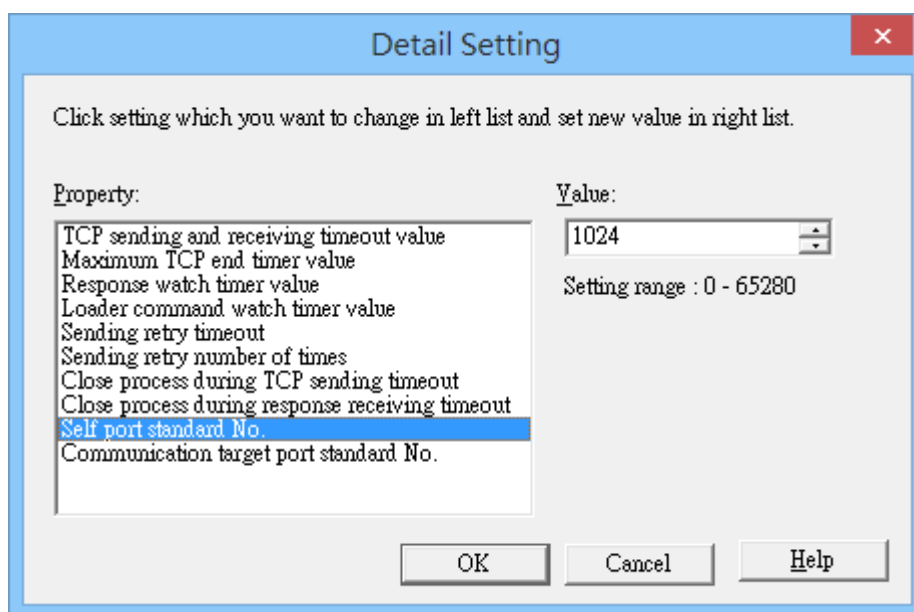
Supported Series: Fuji SPH2000/3000 series PLC, NP1L-ET1 Ethernet module

Website: <http://www.fujielectric.com/fcs/index.html>

### HMI Setting:

Parameters	Recommended	Options	Notes
PLC type	Fuji SPH2000/3000 IEC Mode (Ethernet)		
PLC I/F	Ethernet		
Port no.	507	251 ~ 65531	

When setting port number, please add the offset 251. As shown below, the value in the software is 1024, and then the port number should be:  $1024+251=1275$ .



## Device Address:

Bit/Word	Device	Format	Range	Memo
B	IX	DDDDDDh	10 ~ 238511f	DDD(Slot) / DDD(word) / h(bit)
B	QX	DDDDDDh	10 ~ 238511f	DDD(Slot) / DDD(word) / h(bit)
B	MX1	DDDDh	0 ~ 8191f	
B	MX3	DDDDh	0 ~ 4095f	
B	MX10	DDDh	0 ~ 511f	
B	S	DD.DD	0 ~ 99.99	
W	IW	DDDDDD	1 ~ 238511	DDD(Slot) / DDD(word)
W	QW	DDDDDD	1 ~ 238511	DDD(Slot) / DDD(word)
W	MW1	DDDDD	0 ~ 20000	
DW	MD1	DDDDD	0 ~ 20000	
W	MW3	DDDDD	0 ~ 20000	
DW	MD3	DDDDD	0 ~ 20000	
W	MW10	DDD	0 ~ 511	
DW	MD10	DDD	0 ~ 510	
W	WS	DD	0 ~ 99	
DW	ID	DDDDDD	1000 ~ 238511	DDD(Slot) / DDD(word)
DW	QD	DDDDDD	1000 ~ 238511	DDD(Slot) / DDD(word)

## Wiring Diagram:

### Ethernet cable:

